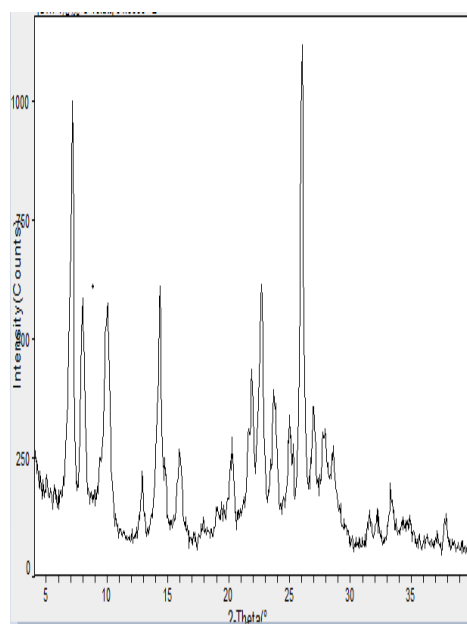


HegreZeo MCM-22

General Description

HegreZeo MCM-22 is a sheet crystal with unique pore structure and acid catalysis. It has high water thermal stability, strong adsorption capacity with large specific surface area.

Product Property



Application

It can be used for the alkylation, environmental protection, modified gasoline, catalytic cracking, isomerization of aromatic compounds and disproportionation, polymerization of olefin isomerization, hydration, etc. At present, it is mainly used in the production of alkyl aromatic compounds, environmental protection and modification of gasoline.

Typical Physical Property

Appearance:	White Powder
Na ₂ O wt%:	< 0.07
SiO ₂ /Al ₂ O ₃ :	28-32
Specific Surface sqm/g:	≥ 350
Crystallinity:	> 90
LOI:	≤ 5

Shelf Life

24 months from the date of production